



Microsoft Dynamics™ NAV

## Draft Survey

# Overview

© 2006 dVision Automatiseringsbureau.

All Rights Reserved. No part of this document may be photocopied, reproduced, stored in a retrieval system, or transmitted, in any form or by any means whether, electronic, mechanical, or otherwise without the prior written permission of dVision Automatiseringsbureau.

No warranty of accuracy is given concerning the contents of the information contained in this publication. To the extent permitted by law no liability (including liability to any person by reason of negligence) will be accepted by dVision Automatiseringsbureau, its subsidiaries or employees for any direct or indirect loss or damage caused by omissions from or inaccuracies in this document.

dVision Automatiseringsbureau reserves the right to change details in this publication without notice. You are not allowed to use this information, copy, publish or sell this solution without a proper license from dVision Automatiseringsbureau.

All product or company names referenced herein are the registered trademarks or trademarks of their respective owners.

dVision Automatiseringsbureau  
Rivium Boulevard 22  
2909 LK Capelle aan den IJssel  
Netherlands

Tel: +31 (0)10 4587800  
Fax: +31 (0)10 4589182  
Email: [software@dvision.nl](mailto:software@dvision.nl)



Microsoft Dynamics™

---

<b>1. Overview .....</b>	<b>3</b>
Screenshots.....	3
▪ Figure 1.....	3
▪ Figure 2.....	4
▪ Figure 3.....	5

# 1. Overview

## Screenshots

Figure 1

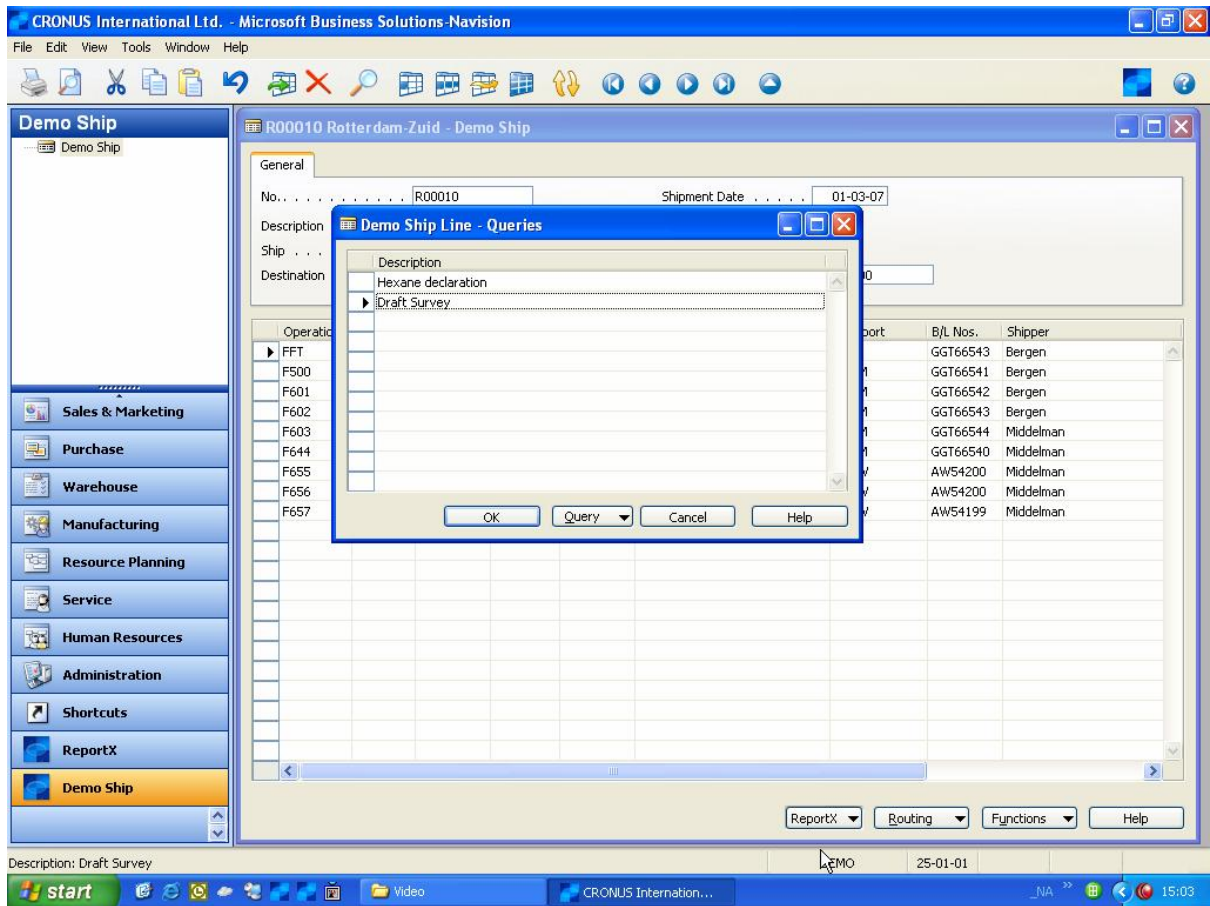


Figure 2

Microsoft Excel - 061108-150421-D-XL-SURVEY.XLS [Read-Only]

File Edit View Insert Format Tools Data Let Window Help eDocPrinter->PDF

Snagit Window

A1

**CRONUS ROTTERDAM**

**IJK-ATTEST / DRAFTSURVEY ATTESTATION / EICHAUFNAHME-ZEUGNIS**

Naam Ltr/Name barge/Schiffsnamen	<b>Rotterdam-Zuid</b>	Schipper/captain/Schiffsführer	<b>Bergen</b>
geladen ex/Loaded ex/geladen ex	<b>D567Y100</b>	Meetbrief/Tonnage cert/Messbrief No:	<b>FFT</b>
Goederen/Commodity/Vare	<b>None</b>	Meetbrief/Tonnage cert/Messbrief d.d.	<b>1-3-2007</b>
Opdrachtgever/Principal/Auftraggeber	<b>Francematic</b>	Nulpunt / zero point / Nullpunkt	
Laadtijd>Loading time/Ladezeit		Geladen Kg / Loaded Kos / geladen Kg	<b>400,000</b>

IJK voor laden/ draught prior to loading dd/on		IJK na laden/draught after loading dd/on	
Eichaufnahme vor Beladung am:		Eichaufnahme nach Beladung am:	
S.B. voor/forepart/vorne	cm	S.B. voor/forepart/vorne	cm
S.B. midden/middle/mitten	cm	S.B. midden/middle/mitten	cm
S.B. achter/aft/hinten	cm	S.B. achter/aft/hinten	cm
B.B./PS.voor/forepart/vorne	cm	B.B./PS.voor/forepart/vorne	cm
B.B./PS.midden/middle/mitten	cm	B.B./PS.midden/middle/mitten	cm
B.B./PS.achter/aft/hinten	cm	B.B./PS.achter/aft/hinten	cm
TOTAAL / Total/Total	cm	TOTAAL / Total/Total	cm
Gemiddeld/Average/Durchschnitt	cm	Gemiddeld/Average/Durchschnitt	cm
Laadhoogte/Loadheight/Ladehöhe	cm	Laadhoogte/Loadheight/Ladehöhe	cm
Gemiddeld/Average/Durchschnitt	-cm	Gemiddeld/Average/Durchschnitt	-cm
Blijft / Remains/ Bleibt	cm	Blijft / Remains/ Bleibt	cm

Dichtheid/Density/Densität Water/Wasser		kg/m3 (B)	Dichtheid/Density/Densität Water/Wasser		kg/m3 (C)
---	--	-----------	---	--	-----------

Zoutcorrectie/Saltcorrection/Salzkorrektur:

cm Gem.Jedige inzinking/Average emptydraught/Durchschnitt leere Einenkung		Dichtheid/Density/Densität (C)	
cm Blijft/Remains/bleibt(A)		Dichtheid/Density/Densität (B)	( )

Sheet1 / Sheet2 / Sheet3 /

start Video CRONUS Internation... Microsoft Excel - 061... 15:04

Figure 3

