



Microsoft Dynamics™ NAV

## Receivable Phone-Information

# Overview

© 2006 dVision Automatiseringsbureau.

All Rights Reserved. No part of this document may be photocopied, reproduced, stored in a retrieval system, or transmitted, in any form or by any means whether, electronic, mechanical, or otherwise without the prior written permission of dVision Automatiseringsbureau.

No warranty of accuracy is given concerning the contents of the information contained in this publication. To the extent permitted by law no liability (including liability to any person by reason of negligence) will be accepted by dVision Automatiseringsbureau, its subsidiaries or employees for any direct or indirect loss or damage caused by omissions from or inaccuracies in this document.

dVision Automatiseringsbureau reserves the right to change details in this publication without notice. You are not allowed to use this information, copy, publish or sell this solution without a proper license from dVision Automatiseringsbureau.

All product or company names referenced herein are the registered trademarks or trademarks of their respective owners.

dVision Automatiseringsbureau  
Rivium Boulevard 22  
2909 LK Capelle aan den IJssel  
Netherlands

Tel: +31 (0)10 4587800  
Fax: +31 (0)10 4589182  
Email: [software@dvision.nl](mailto:software@dvision.nl)



Microsoft Dynamics™

---

<b>1. Overview .....</b>	<b>3</b>
Screenshots.....	3
▪ Figure 1.....	3
▪ Figure 2.....	4
▪ Figure 3.....	5
▪ Figure 4.....	6

# 1. Overview

## Screenshots

Figure 1

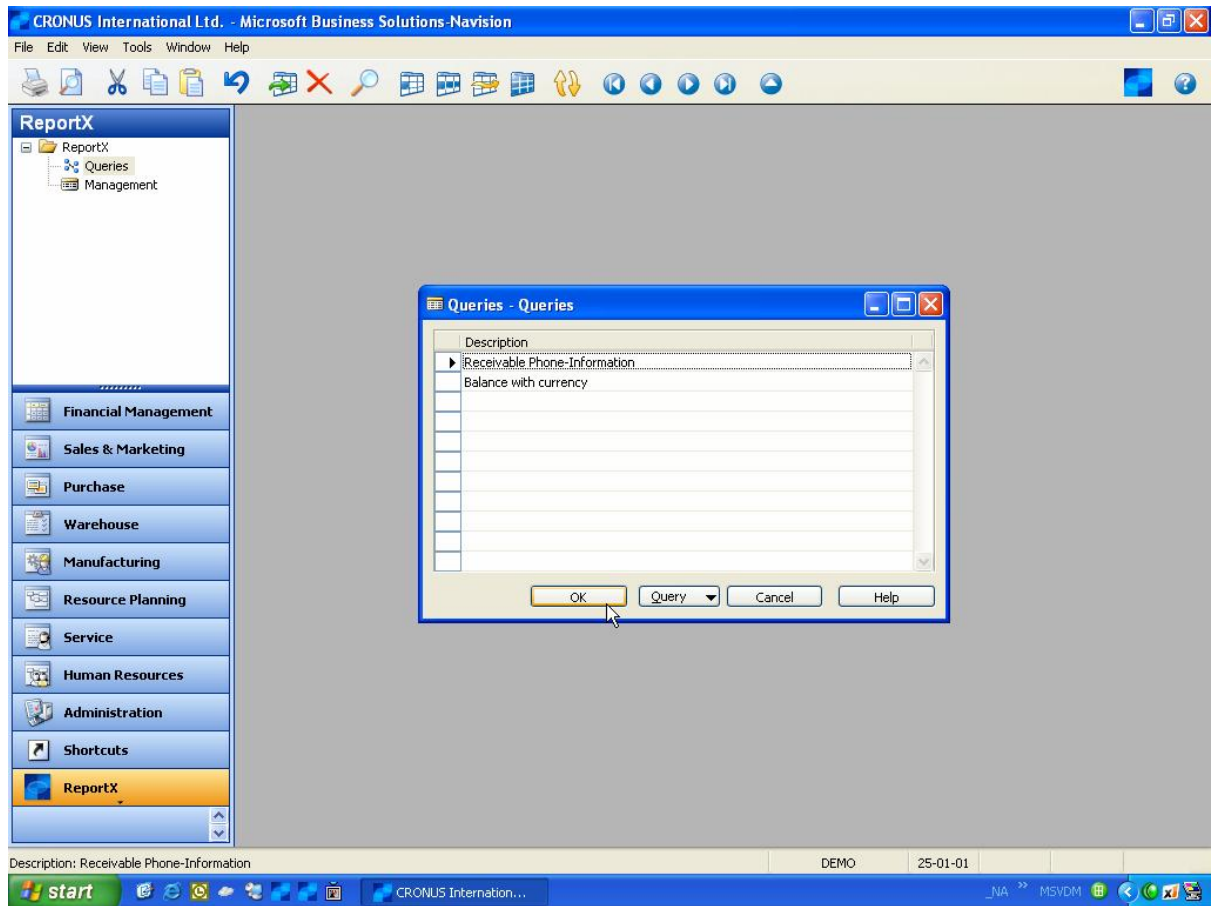


Figure 2

CRONUS International Ltd. - Microsoft Business Solutions-Navision

File Edit View Tools Window Help

ReportX

- ReportX
  - Queries
  - Management
- Financial Management
- Sales & Marketing
- Purchase
- Warehouse
- Manufacturing
- Resource Planning
- Service
- Human Resources
- Administration
- Shortcuts
- ReportX

X-CRP- Receivable Phone- Information - Query Result

No.	Name	Payment Terms ...	Credit Limit (LCY)	Balance (LCY)	Phone No.		
10000	The Cannon Group ...	1 Month/2% 8 days	0	168.518,54			
			<b>Posting Date</b>	<b>Document No.</b>	<b>Overdue</b>	<b>Remaining Ar</b>	
			14-01-01	104001	11	-2	
			31-12-00	00-11	-6	63.4	
			31-12-00	00-16	-6	33.8	
			31-12-00	00-9	-6	50	
			07-01-01	103005	-10	8.2	
			17-01-01	103018	-23	4.1	
			17-01-01	103022	-23	1	
			22-01-01	103001	-28	8.1	
						<b>168.5</b>	
No.	Name	Payment Terms ...	Credit Limit (LCY)	Balance (LCY)	Phone No.		
20000	Selangorian Ltd.	Net 14 days	0	96.049,99			
			<b>Posting Date</b>	<b>Document No.</b>	<b>Overdue</b>	<b>Remaining Ar</b>	
			31-12-00	00-8	14	48.8	
			14-01-01	103008	1		
			16-01-01	103009	-3	2	
			22-01-01	103014	-4	1.1	
			31-12-00	00-14	-6	38.0	
			22-01-01	103002	-11	6.9	
						<b>96.0</b>	
No.	Name	Payment Terms ...	Credit Limit (LCY)	Balance (LCY)	Phone No.		
30000	John Haddock Insu...	Current Month	0	349.615,4			

A: No. DEMO 25-01-01

start CRONUS Internation... \_NA MSVDM

Figure 3

The screenshot shows the Microsoft Business Solutions-Navision interface. The main window displays a 'Query Result' for 'X-CRP-Receiveable Phone-Information'. The table contains the following data:

No.	Name	Payment Terms ...	Credit Limit (LCY)	Balance (LCY)	Phone No.
10000	The Cannon Group ...	1 Month/2% 8 days	0	168.518,54	
20000	Selangorian Ltd.	Net 14 days	0	96.049,99	
30000	John Haddock Insu...	Current Month	0	349.615,4	
40000	Deerfield Graphics ...	1 Month/2% 8 days	0	1.328,88	
50000	Guldford Water De...	Net 14 days	0	33.705,15	
01445544	Progressive Home ...	Net 14 days	0	1.499,03	
01454545	New Concepts Furn...	Current Month	0	222.241,32	
32656565	Antarcticopy	Net 14 days	2.500	2.582,8	
35451236	Gagn & Gaman	Net 14 days	895,59	877,32	
35963852	Heimlisprydi	Current Month	0	2.024,21	
42147258	BYT-KOMPLET s.r.o.	1 Month/2% 8 days	0	1.602,9	
43687129	Designstudio Gmun...	1 Month/2% 8 days	0	2.498,1	
46897889	Englunds Kontorsm...	Current Month	0	673,71	
47563218	Klubben	Net 14 days	0	11.772,2	
49525252	Beef House	1 Month/2% 8 days	0	5.941,36	
49633663	Autohaus Mielberg KG	Net 14 days	0	3.874,8	

A yellow callout box with the text 'View only the customers' is overlaid on the bottom right of the table area. The interface includes a left-hand navigation pane with categories like Financial Management, Sales & Marketing, and ReportX. The status bar at the bottom shows 'B: The Cannon Group PLC', 'DEMO', and '25-01-01'.

Figure 4

The screenshot displays the Microsoft Business Solutions-Navision interface. The main window shows a query result for 'X-CRP- Receivable Phone- Information'. The table contains the following data:

D	E	F	G	H	I
Posting Date	Document No.	Overdue	Remaining Amt. ...	On Hold	Applies-to ID
14-01-01	104001	11	-292,84		
31-12-00	00-11	-6	63.473,13		
31-12-00	00-16	-6	33.852,35		
31-12-00	00-9	-6	50.778,5		
07-01-01	103005	-10	8.269,04		
17-01-01	103018	-23	4.101,88		
17-01-01	103022	-23	154,13		
22-01-01	103001	-28	8.182,35		
31-12-00	00-8	14	48.845,77		
14-01-01	103008	1	787,4		
16-01-01	103009	-3	215,83		
22-01-01	103014	-4	1.145,33		
31-12-00	00-14	-6	38.083,88		
22-01-01	103002	-11	6.971,78		
31-12-00	00-4	20	33.852,33		
31-12-00	00-7	17	76.167,75		
31-12-00	00-10	-6	76.167,75		
31-12-00	00-13	-6	80.399,29		
31-12-00	00-15	-6	76.167,75		
22-01-01	103003	-6	5.999,4		
15-01-01	103021	-6	861,13		
11-12-00	103019	14	1.328,88		
03-12-00	103020	39	666,75		
23-01-01	103004	-12	32.788,4		
25-01-01	103023				
22-01-01	103013				
31-12-00	00-17				
17-01-01	103010	3	2.582,8		
25-01-01	103017	-6	877,32		

A yellow callout box with the text 'or view the lines..' is positioned over the row with Posting Date 31-12-00 and Document No. 00-17.